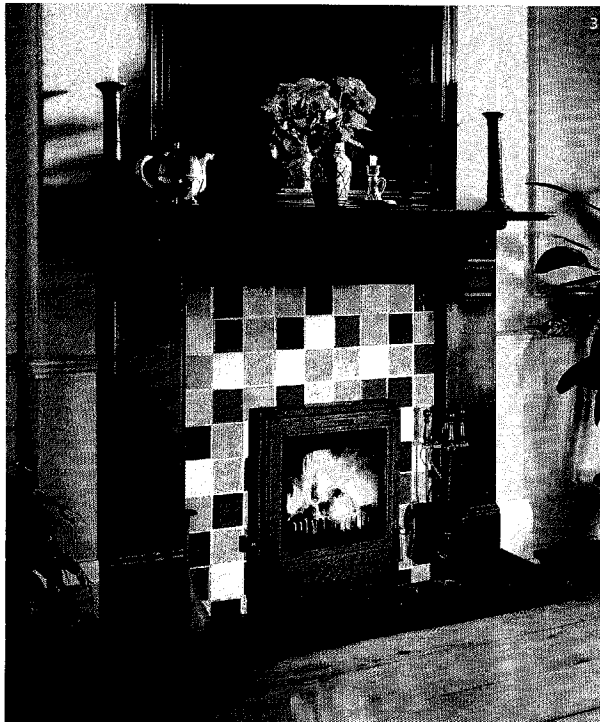


CHARIOTS OF FIRE



1 Phenomenal example of outstanding craftsmanship from **Craigavon Marble**. Price on request. 2 The Grainne stove combines classic **Stanley** stove design with clean lines and contemporary good looks. It features a double door with large viewing window to showcase the real fire effect, while maintaining all the efficiencies of a Stanley stove. This stove also incorporates Stanley's unique clean burn technology which maximises the stove's heat efficiency and protects the environment from harmful emissions. From £1,311/€1,875. 3 The new environmentally friendly '300 Series' of Convector stoves from **Esse**. With an improved convecting process enabling the fire to emit a continuous stream of hot air lets air penetrate the entire room. Price on request. 4 The Dunsley Highlander range of traditional wood burning and solid fuel stoves from **Hwam**. The highly efficient Highlander is available for room heat only, or with the option of boilers to provide domestic hot water, or full central heating. From £580.39/€829.95.



**Hole-in-the-wall** fireplaces bring the warm vitality of fire in a small frame format. Like a living picture, this gas fireplace floats high up the wall, adding a dynamic decorative element. A thick frame of smooth Asatine, Gunmetal, Taupe, Tungsten, or Black rings a single ribbon of flame. The austere surface draws attention to the flickering vibrant fire, while complementing any decor with sophisticated style.

**Stoves**, like range cookers, were once only seen in very traditional, large country homes. Nowadays, they are a fashionable, efficient alternative to conventional heating systems. With more young homeowners choosing stoves to heat their rooms, increasing numbers of sleek and modern designs are becoming available. The traditional cast-iron moderns are just as popular and country-house chic remains in vogue. Stoves can also be significantly more energy efficient. A good stove emits around 60 per cent of its heat into the room, compared to the reported 20 per cent you'll get from the average domestic fireplace. Free standing stoves also radiate heat all around them, thus burning less fuel than a conventional fireplace to give the same level of heat. Many can also be safely allowed to burn overnight.

**Solid fuel** fires come in two types. The open fire is often just a basket or grate for burning coal, smokeless fuel or wood. They look good but may not be particularly efficient and quite difficult to control. Consider closed designs with glass doors and convection channels. These designs burn efficiently by utilising clean-burn technology to wring the maximum amount of heat out of the burning fuel. An adaptation of the system also keeps the glass on the door clean. Some designs allow air to be ducted from the heat exchanger to other rooms.

**Pellet stoves** are free standing stoves designed primarily for home heating. Instead of burning firewood, these types of stoves burn wood pellets which are made from sawdust. Since sawdust is a waste product from the timber industry they are in essence, a very green solution to home heating. The main advantage of a pellet stove is the simplicity of the fuel. It comes in 40 pound bags which can be obtained from most feed or hardware stores or can be delivered directly to your home. There is no wood to chop or split, no need for a wood rack, you just pour the pellets into the hopper inside the stove. The hopper then automatically feeds the appropriate amount of pellets into the combustion chamber, to provide nice steady heating with very little ash or residue. Because

the hopper feeds the pellets into the combustion chamber there is no need to worry about tending the fire. The fire pretty much tends itself. And, if you have a fairly big hopper you don't need to put in the fuel that often.